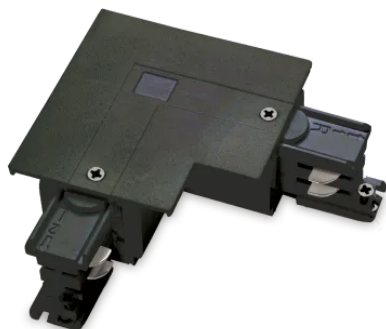


## Info generali

## Tecnico - Accessorio



|                      |  |
|----------------------|--|
| <b>Ean</b>           | 8021696188102                                    |
| <b>Articolo</b>      | LINK 3-PHASE TRIM L-CONNECTOR RIGHT<br>ON-OFF BK |
| <b>Installazione</b> | Accessorio                                       |
| <b>Garanzia</b>      | 5 years  |
| <b>Peso lordo</b>    | 0.14 kg  |
| <b>Volume</b>        | 0.00043 m <sup>3</sup>                           |

## Info tecniche e installative

|                        |              |
|------------------------|--------------|
| <b>Peso netto</b>      | 0.13 kg      |
| <b>Conformità</b>      | CE           |
| <b>Tipo accessorio</b> | -            |
| <b>Alimentazione</b>   | 120-240 V AC |

