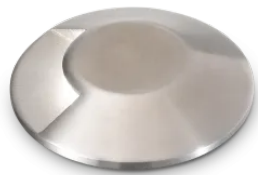


## Info generali

## Esterno - Lampade da incasso

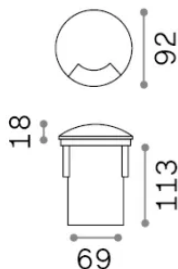
Outdoor ground recessed path light with integrated LED sources and direct light emission



<b>Ean</b>	8021696247144
<b>Articolo</b>	ROCKET FI D9.0 SINGLE 3000K
<b>Installazione</b>	Lampade da incasso
<b>Garanzia</b>	5 years
<b>Peso lordo</b>	0.89 kg
<b>Volume</b>	0.0016 m <sup>3</sup>

## Info tecniche e installative

<b>Peso netto</b>	0.56 kg
<b>Classe di isolamento</b>	I
<b>Grado di protezione</b>	IP67
<b>Conformità</b>	CE
<b>Temperatura d'esercizio</b>	-15° ~ +45 °C
<b>Dimmer</b>	Non-dimmable, On-Off
<b>Alimentazione</b>	100-240 V AC 50/60 Hz
<b>Alimentatore</b>	In-built, included NO, electronic
<b>Resistenza al carico</b>	IK08



## Info sorgente e prestazionali

<b>Sorgente integrata</b>	Integrated LED module
<b>Sorgente sostituibile</b>	No
<b>Potenza</b>	3 W
<b>Emissione</b>	Direct
<b>Consumo massimo</b>	max 3 W
<b>Caratteristiche LED</b>	LED SMD
<b>CCT LED</b>	3000 K
<b>Durata LED (t. 25°c)</b>	30000 h
<b>CRI</b>	> 90
<b>SDCM</b>	3
<b>Fascio luminoso</b>	-
<b>Flusso sorgente</b>	260 lm
<b>Flusso utile</b>	12 lm
<b>Rischio fotobiologico</b>	2