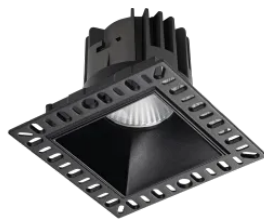


Info generali

Tecnico - Lampade da incasso

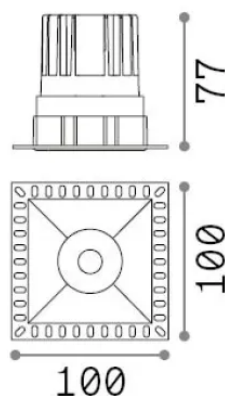
Indoor ceiling recessed projector with integrated LED sources and direct light emission



Ean	8021696319674
Articolo	GAME TRIMLESS SQUARE 11W 3000K NE
Installazione	Lampade da incasso
Garanzia	5 years
Peso lordo	0.38 kg
Volume	0.00115 m ³

Info tecniche e installative

Peso netto	0.3 kg
Classe di isolamento	II
Grado di protezione	IP20
Conformità	CE
Temperatura d'esercizio	0° ~ +40 °C [DO NOT COVER]
Dimmer	Non-dimmable, On-Off
Alimentazione	220-240 V AC 50/60 Hz
Alimentatore	Separate, included Replaceable (by qualified operators only), electronic
Protezione frontale	IP40
Accessori non inclusi	Dimmable driver



Info sorgente e prestazionali

Sorgente integrata	Integrated LED module
Sorgente sostituibile	Replaceable (by qualified operators only)
Potenza	11 W
Emissione	Direct
Consumo massimo	max 11 W
Caratteristiche LED	LED COB CREE
CCT LED	3000 K
Durata LED (t. 25°C)	50000 h
CRI	> 90
SDCM	3
Fascio luminoso	36°
UGR massimo	< 19
Flusso sorgente	950 lm
Flusso utile	660 lm
Rischio fotobiologico	1